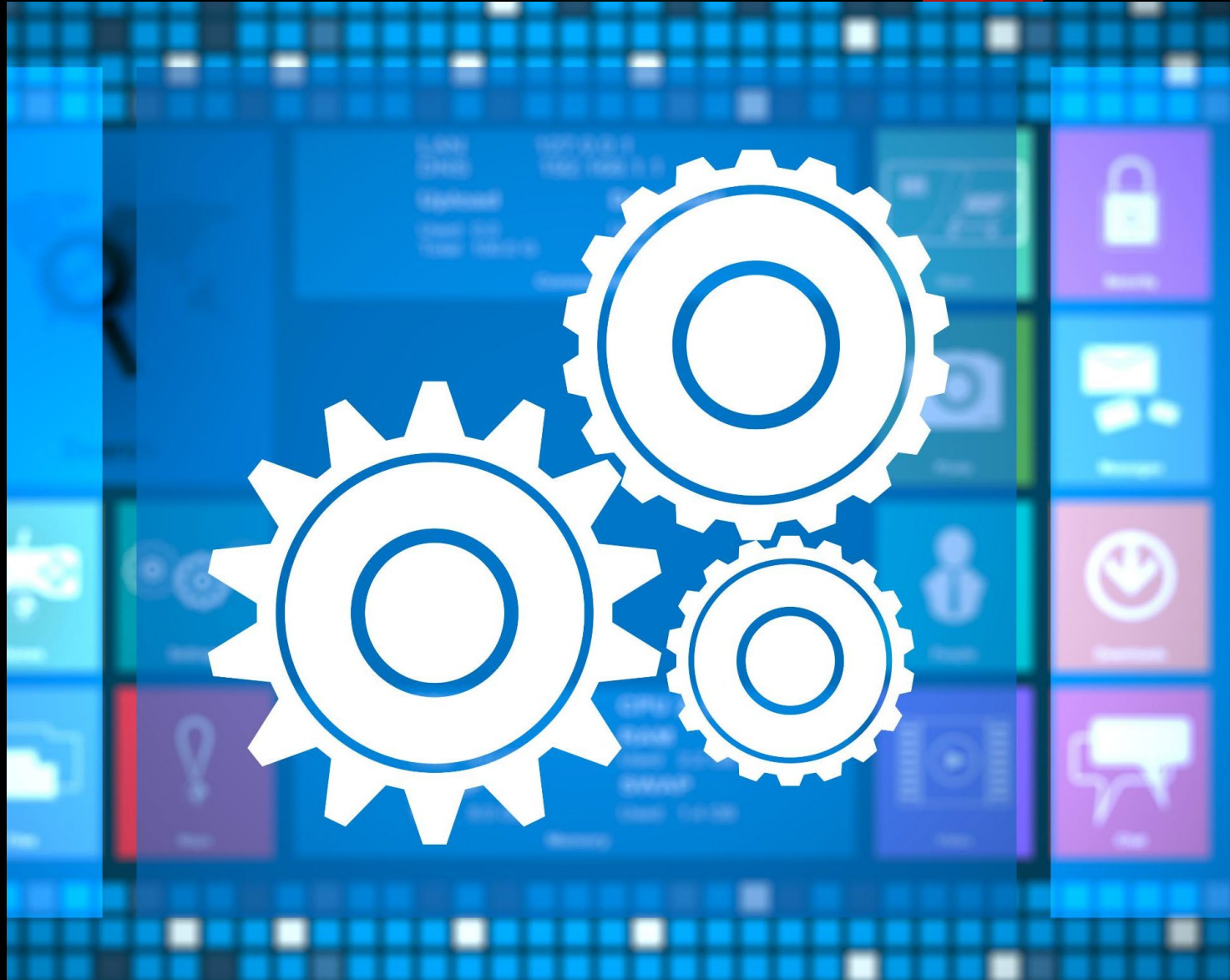


Deploying Teams Premium and Microsoft Places: A Comprehensive Guide

OVERVIEW OF DEPLOYMENT PROCESSES AND SUPPORT RESOURCES



Agenda Overview

- ▶ Why Deploy Teams Premium?
- ▶ How to Deploy Teams Premium
- ▶ Why Deploy Microsoft Places?
- ▶ How to Deploy Microsoft Places
- ▶ Reference to Public Documentation



Why Deploy
Teams Premium?



Advanced Security and Compliance Options

End-to-End Encryption

Teams Premium offers end-to-end encryption for meetings. Ensuring that data remains secure during transmission, providing peace of mind for organizations.

Compliance Tools

The platform includes compliance tools that help organizations adhere to industry standards and regulations, streamlining audits and assessments.

Heightened Security Measures

Organizations benefit from enhanced security measures that protect sensitive information and reduce the risk of data breaches.



Enhanced Collaboration Features

Advanced Meeting Options

Teams Premium offers advanced meeting options to enhance productivity and streamline collaboration among team members during virtual meetings.

Custom Branding

With custom branding capabilities, teams can personalize their meeting experience, reinforcing their corporate identity and enhancing engagement.

Intelligent Presentation Capabilities

The intelligent presentation features in Teams Premium allow for more dynamic and effective presentations, improving participant engagement.



How to Deploy Teams Premium

Pre-Deployment Considerations

Assess Organizational Needs

Evaluating your organization's requirements is crucial to ensure Teams Premium meets specific operational goals.

Ensure Compatibility

Check compatibility with existing infrastructure to avoid disruptions and ensure smooth integration.

Prepare IT Team

Training and preparing the IT team for the transition is essential to handle any deployment challenges.

License Requirements

Qualifying Microsoft 365 subscription for Core features

Teams Premium license for Enhanced features

Microsoft 365 Copilot license for additional AI-driven features - optional

Advanced Deployment Guide for Teams Premium

- ▶ Access the guide through the M365 Admin Center for detailed instructions.
- ▶ The guide includes best practices for deployment and configuration.
- ▶ It provides troubleshooting tips for common issues during setup.

Demo

Link to Setup Guides:

[Setup - Microsoft 365 admin center](#)

Teams Premium Setup Guide:

[Microsoft 365 admin center](#)

Team Premium Setup Non-Admin:

<https://setup.cloud.microsoft/teams/plan-and-deploy-microsoft-teams-premium>

Post-Deployment Management and Support

System Monitoring

Ongoing system monitoring is essential to identify issues and ensure optimal performance after deployment.

User Feedback Collection

Gathering user feedback is crucial for understanding their experiences and improving the system over time.

Ongoing Support

Providing ongoing support ensures users have the assistance they need to utilize the system effectively.





Why Deploy Microsoft Places?

Enhancing Employee Experience

Streamlined Collaboration:

In-person collaboration brings a completely different perspective to a collaborative project. Places helps determine when and where those collaborative meetings take place, fostering better in-person decisions as to when and why to meet in the office or other corporate sites.

Space Management Improvements:

With the use of IMDF files (CAD drawings), users have a visual reference of where they and their colleagues will be posted at in the corporate site for better resource allocation.

Example: Desk/Desk Pool, Meeting Room, Meeting Room Resource booking.

Recurring schedule through Microsoft Places:

Outlook: Create recurring meetings or appointments directly in Outlook syncing with Microsoft Places

Teams Integration: Through Microsoft Teams, you can schedule recurring meetings. Meetings will reflect in Microsoft Places, helping you manage your physical presence more efficiently

See when your colleagues are in the office is easy:

Work Location Settings: Set and view your work location in Microsoft Teams and Outlook.

Profile and Peek Cards: Your colleagues' profile cards in Teams and Outlook will show their work location and availability

Microsoft Places App: The Microsoft Places app provides a feature called "workplace presence," which lets you update your work location and see who else is in the office that day



Supporting Hybrid Work Environments

Adaptable Workspaces

Microsoft Places facilitates the creation of adaptable workspaces that meet the needs of both in-office and remote employees via Exchange Resources.

Hybrid Scheduling

You can view the week ahead and see when your co-workers and close collaborators plan to be in the office.

Enhanced Productivity (requires Copilot license)

Microsoft Places uses AI to recommend the best days for in-office work based on when your teammates or collaborators plan to be onsite. Places can even use Copilot to manage a booked Conference Room and scale up or down the size for you based on response to a meeting invite – this is called Dynamic Adjustment





Optimizing Workspace Integrations

Connecting Building Occupancy Signals

Motion Sensors and People Count Sensors: Sensors can be connected to Microsoft Places providing real-time occupancy data. This data helps in understanding room usage and optimizing space management.

Badge Access Systems: Data can be uploaded to Microsoft Places tracking building entry and exit. This involves adding badge-access devices and uploading telemetry data

Using Microsoft Teams Room (MTR) Sensors:

MTR sensors provide occupancy data based on Teams meeting schedules. This data is integrated into Microsoft Places for insights into room utilization

Data Integration and Analytics:

Microsoft Places uses first-party and third-party data to create detailed analytics reports. These reports help real-estate and facility managers understand and optimize space usage across buildings, rooms, and desk pools



How to Deploy Microsoft Places

Initial Setup and Configuration

Configuration Settings

Configuring necessary settings is crucial for the proper functioning of Microsoft Places during initial setup.

System Integration

Integrating Microsoft Places with existing systems (sensors) is essential for a seamless user experience, functionality and for analytical purposes.

Prerequisites for Deployment

Licensing: M365 Core, *recommended* - Teams Premium, *recommended* - Copilot

Roles: TenantPlacesManagement, MailRecipient and ExchangeAdmin

PowerShell: PowerShell 7.4.0 or higher



Places + Teams Premium + Copilot For the Win!

Importance of Integration

Microsoft Places Core:

Work plans, Workplace presence, In-person events, Hybrid RSVP and Places card.

Microsoft Places + Teams Premium:

Places explorer, Individual Desk Booking, Room check-in and auto release, Quick book, Team guidance, Intelligent suggestions (AI), Space analytics

Microsoft Places + Copilot:

Managed Room Booking

Microsoft Places + Teams Premium + Copilot (future state):

In-office days recommendations, Space analytics with Copilot

[Microsoft Places overview - Microsoft Places | Microsoft Learn](#)



Demo

Link to Setup Guides:

[Setup - Microsoft 365 admin center](#)

Microsoft Places Setup Guide:

[Microsoft 365 admin center](#)

Continuous Monitoring and Improvement

Monitoring Usage Patterns

Regularly monitoring usage patterns helps in understanding how Microsoft Places is being utilized by employees.

Gather Employee and Customer Feedback

Collecting employee and customer feedback is essential for identifying strengths and weaknesses in the system, ensuring user satisfaction.

Secure By Design

Data Protection: Microsoft Places uses robust encryption methods to protect data both at rest and in transit.

Compliance with Industry Standards: Microsoft Places adheres to various industry standards and regulations, such as GDPR, HIPAA, and ISO/IEC 27001.

Regular Security Updates: The platform receives regular security updates to address new vulnerabilities and threats.

Access Controls: Microsoft Places implements strict access controls to ensure that only authorized users can access sensitive data and features.





Reference to Public Documentation



Teams Premium Deployment Resources

Official Microsoft Resources

Leverage official Microsoft resources that provide comprehensive guidance on deploying Teams Premium effectively.

[Microsoft Teams Premium - Overview for admins - Microsoft Teams | Microsoft Learn](#)

[Microsoft Teams Premium licensing - Microsoft Teams | Microsoft Learn](#)

Advanced Deployment Guides:

<https://aka.ms/TeamsPremiumDeployment>

Team Premium Setup Non-Admin:

<https://setup.cloud.microsoft/teams/plan-and-deploy-microsoft-teams-premium>

Mentioned Examples:

[Sensitivity labels for Teams meetings - Microsoft Support](#)

[Personalize Your Windows Experience With Themes](#)

<https://learn.microsoft.com/microsoft-365/places/places-overview#license-requirements>

[Manage Queues app for Microsoft Teams - Microsoft Teams | Microsoft Learn](#)

[What is Virtual Appointments? - Microsoft Support](#)

Microsoft Places Deployment Resources

Comprehensive Resources

Microsoft offers detailed deployment guides to assist users in implementing Microsoft Places effectively.

Advanced Deployment Guide: [Microsoft 365 admin center](#)

Important Implementation Documents

<https://learn.microsoft.com/microsoft-365/places/places-overview#license-requirements>

<https://learn.microsoft.com/microsoft-365/places/managementoverview>

[Configure buildings and floors - Microsoft Places | Microsoft Learn](#)

[Understanding work location - Microsoft Places | Microsoft Learn](#)

[Turn on Places finder - Microsoft Places | Microsoft Learn](#)

[Configure desk booking - Microsoft Places | Microsoft Learn](#)

[Connecting building occupancy signals - Microsoft Places | Microsoft Learn](#)

[Enable check-in and auto release - Microsoft Places | Microsoft Learn](#)

[Set-PlaceV3 - Microsoft Places | Microsoft Learn](#)

Microsoft Learn tips for Success

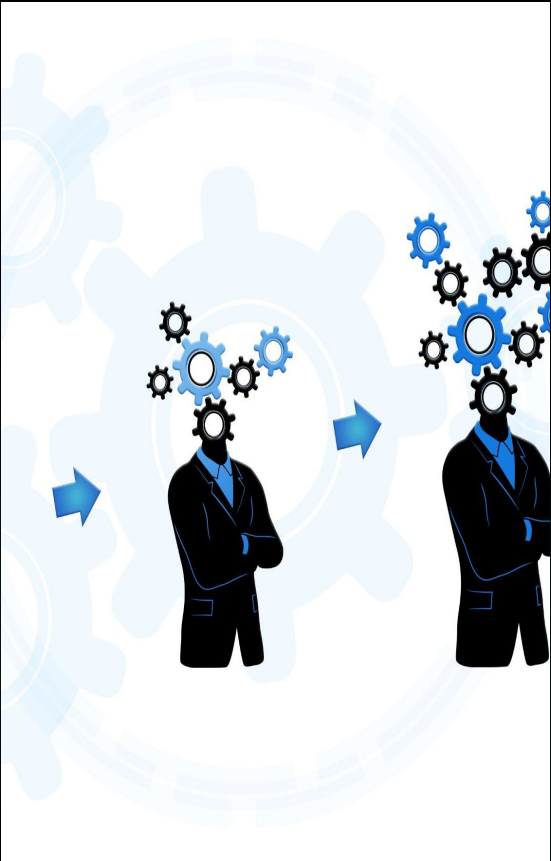
The resources include tips and best practices to optimize the use of Microsoft Places post-deployment.

<https://www.microsoft.com/microsoft-places>

<https://learn.microsoft.com/microsoft-365/places>

<https://support.microsoft.com/office/get-started-with-microsoft-places-49b7ea21-b9e1-4ccd-acd6-c600f3da633c>

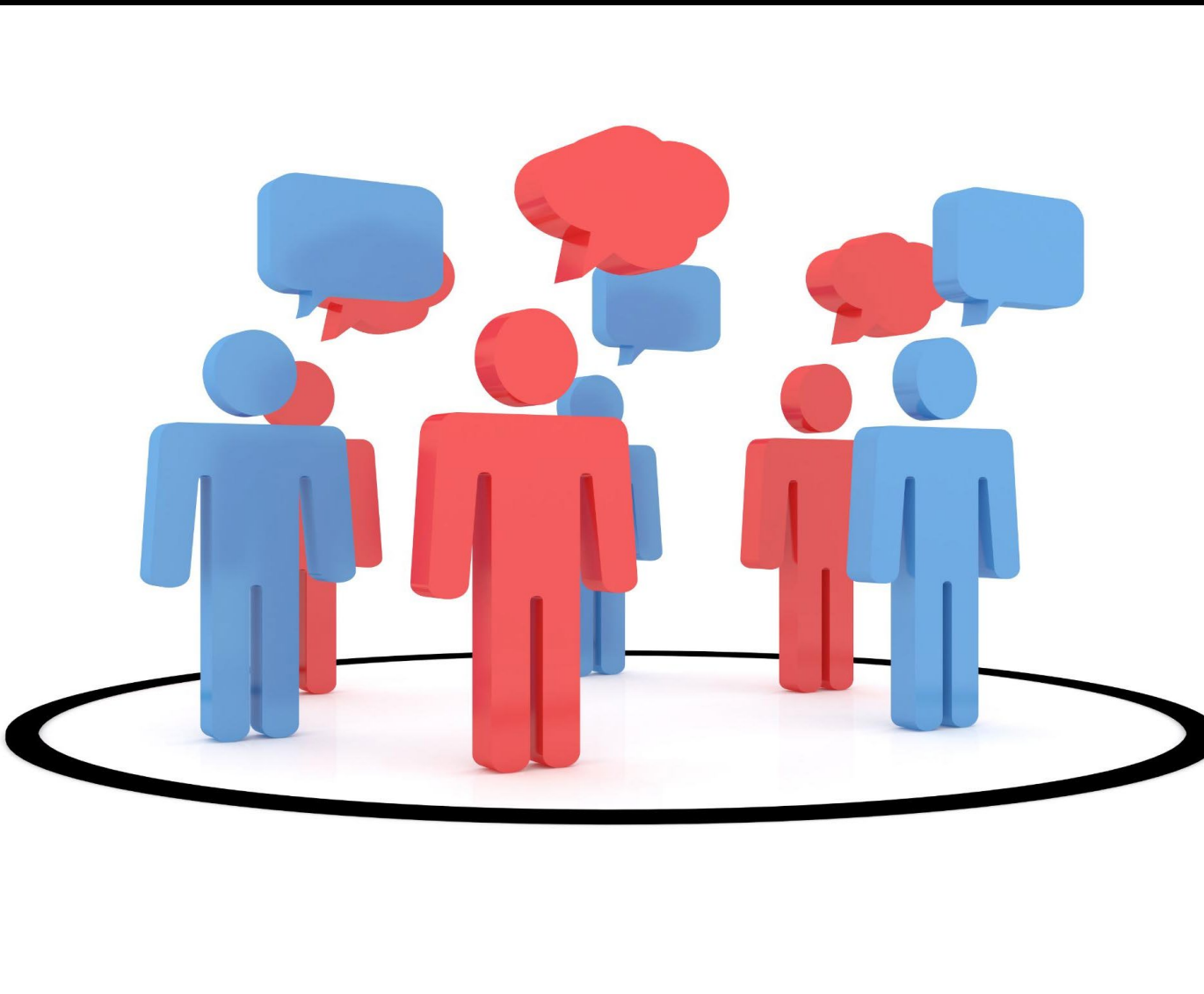
<https://aka.ms/PlacesDeployment>





Additional Support and Community Forums

Additional Support and Community Forums



Utilizing Community Forums

Places Office Hours

<https://teams.microsoft.com/meet/280145245108?p=H1KZ4hdKQLTtZiYIm>

Teams Premium Adoption for IT Pros

[Assign Teams Premium licenses to users \(Microsoft Teams Premium how-to video series\) – Microsoft Adoption](#)