

Partners Migration Open Office Hours

FY25 Q2 - December
2024



Call Agenda

Topic	Americas/EMEA Speaker	Asia Speaker
Six-month FastTrack Migrations Roadmap	Jules Humbird	Gokul Pillai
FastTrack Partner Community Qualification	Tony Curry	Gokul Pillai / Tony Curry
Office Hours Audience	Kat Wojtyczka	Gokul Pillai
Requested in FY25 Q1 session	Jules Humbird	Mohammed Shah
Q&A	All	Gokul Pillai

**Questions - use:
FTMPartners@microsoft.com**

Migration Benefit Updates

Six-month FastTrack Migrations Roadmap

Jules Humbird - Americas/EMEA

Gokul Pillai - Asia

E@RS S Q@BJ RDQUHBDR QN @C L @O

New FastTrack Workloads

FastTrack (FT) Migrations is currently evaluating new migration workloads

- Slack to Teams (S2T) Migrations – (Private Preview) 1P tooling announced at Microsoft Ignite
- Cross-Tenant (limited FastTrack Private Preview)
- Google Compete:
 - Forms: GA in MM, currently being developed for Migration Hub
 - Resources: GA with PowerShell, currently being developed for MAC/Migration Hub
 - Mailbox analysis: provides the ability to analyze the size of source mailbox for Google or IMAP
 - Gmail Permissions/Delegates/Task is GA
 - Identity/Groups: Private Preview, we are seeking customers to pilot this tooling

Security Improvements

As part of FT Migrations, we will make investments in the following areas:

- CoPilot – Migration Coaching, throughput Analysis (FY 2025)
 - ChatBot is now available
- Role Based Access Controls (RBAC) for File Share Migrations – Migrator Role (Scheduled for Q1 FY 2025)
- Certificate based authentication for email migrations: Exchange/Gmail (Preview)

**Questions - use:
FTMPartners@microsoft.com**

FastTrack Partner Community Qualification

Migration exams history

Tony Curry - Americas/EMEA

Tony Curry - Asia

FastTrack Partner Community Qualification

Become a Leader in the FastTrack Community

By attaining one or more Microsoft FastTrack Partner Community Qualifications, you're tapping into a treasure chest of knowledge to put you and your organization ahead of the competition. With knowledge, comes confidence allowing you to stand out, gaining the attention of Microsoft customers*

Get Qualified as a FastTrack Community Partner!

Don't miss your chance to bring more value, more expertise, and more impact to your customers. Get ready to start your journey to FPC Qualifications and set your FastTrack practice up for success. Elevate your business, empower your team, and unlock limitless possibilities!

Credibility

Attaining qualification doesn't just signal your expertise; it shows you're among the very best. With qualification partners hold a mark of trust that shows you have the proven skills, insights, and commitment to drive success

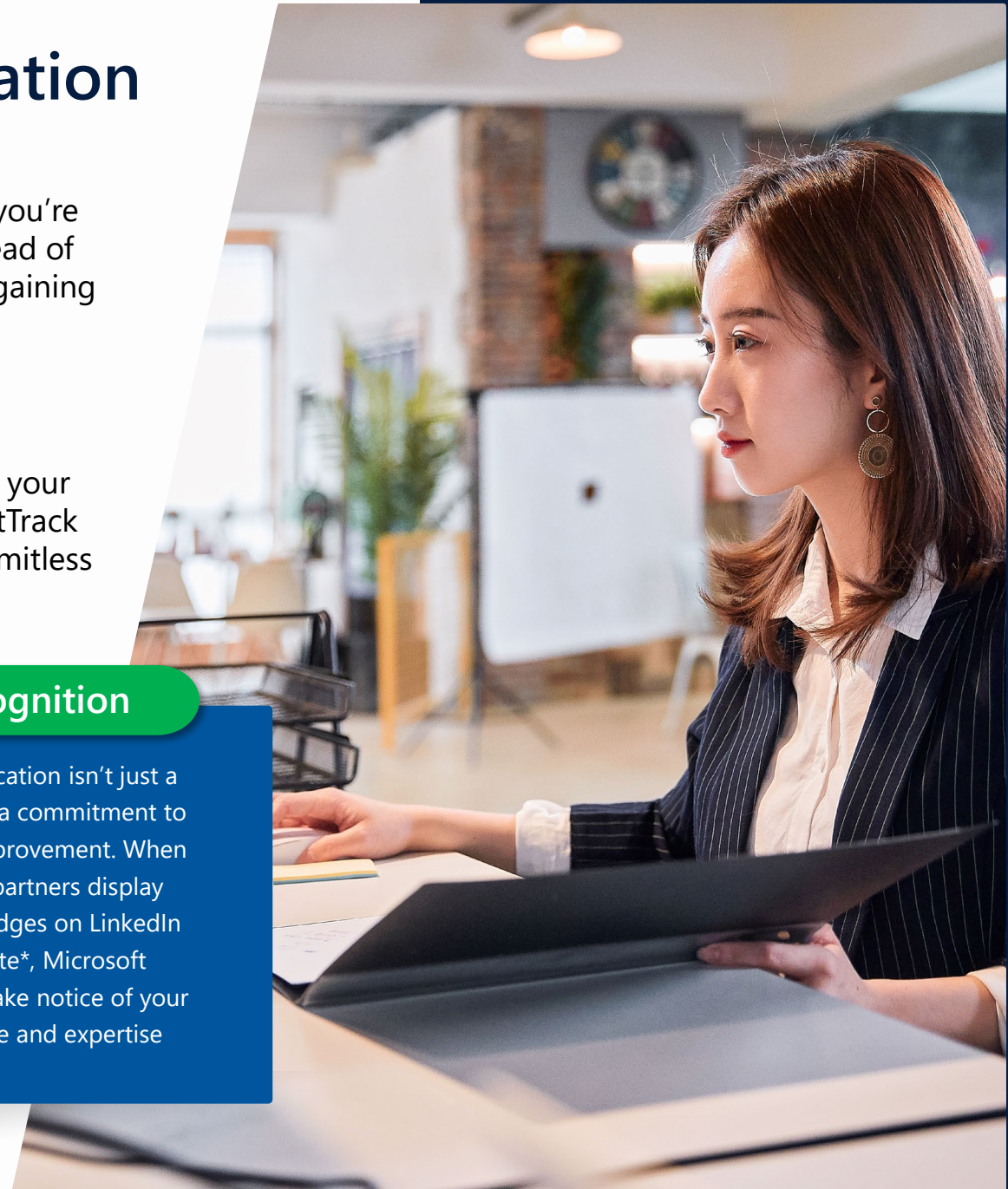
Delighted Customers

Qualification brings knowledge and confidence positioning you and your teams to deliver seamless cloud adoption experiences. Thereby allowing you to exceed expectations, creating delighted customers who rely on you for future projects

Recognition

FPC Qualification isn't just a badge—it's a commitment to ongoing improvement. When qualified partners display attained badges on LinkedIn or website*, Microsoft customers take notice of your knowledge and expertise

*Additional information coming in the weeks ahead



Migration Office Hours Audience

Getting to know our Audience

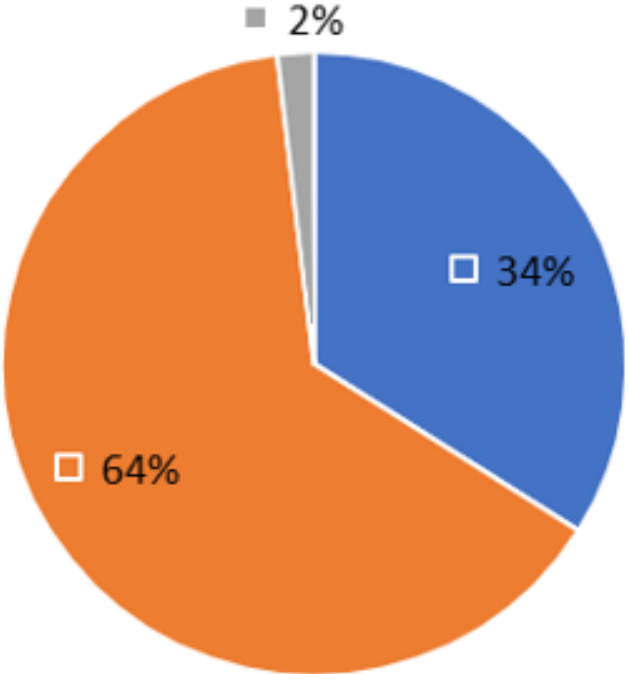
Katarzyna Wojtyczka - Americas/EMEA

Gokul Pillai - Asia

FY25 Q1 sessions participants across all regions

Participated

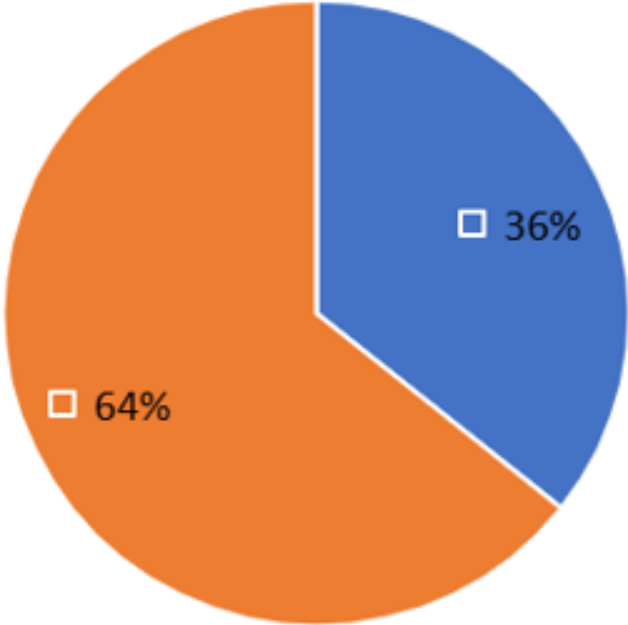
Migration Involvement



■ involved ■ not involved ■ no reply

Registered

Registered - absent



■ involved ■ not involved

FY25 Q1 sessions participants roles

Solution Advisor

Technology Evangelist

Team Lead

Cloud data & Security Admin

Internal Sales

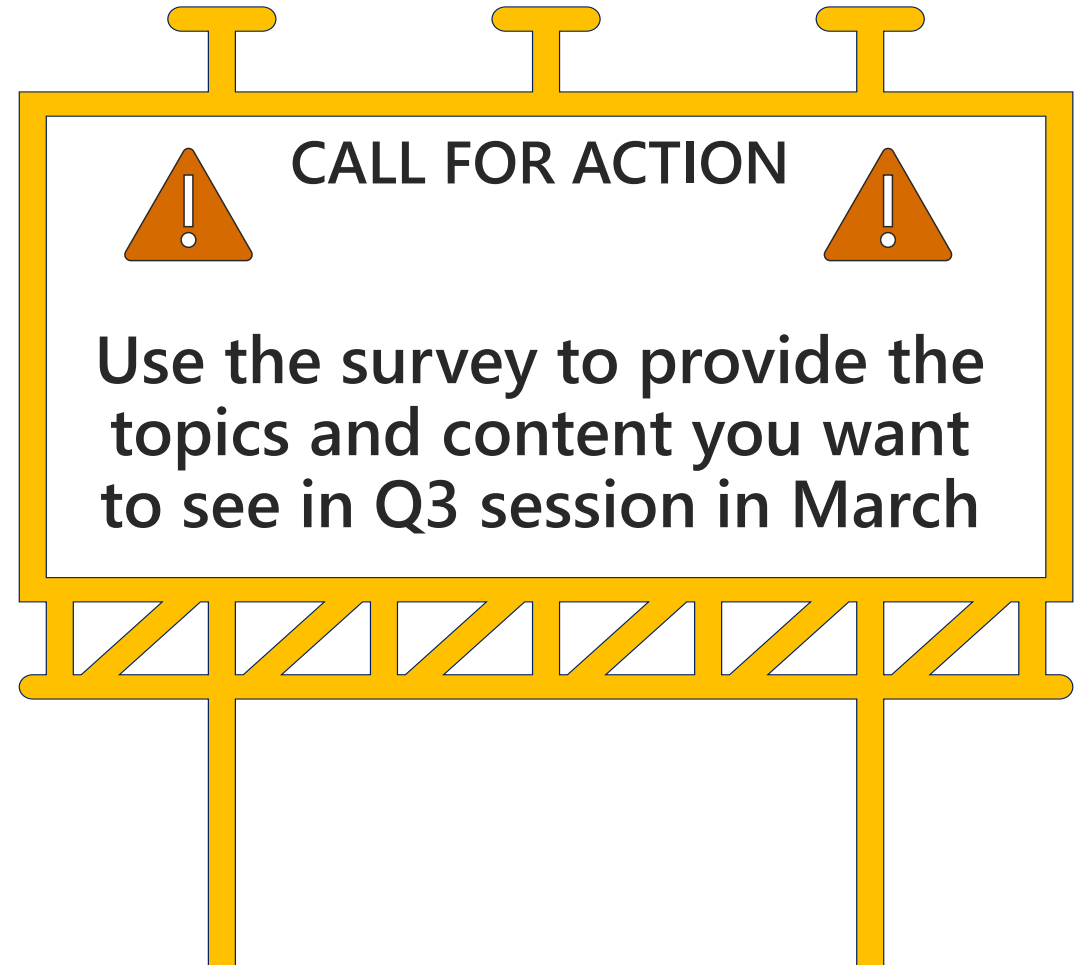
Solution Architect / Manager

Adoption Specialist

Program Manager

System Administrator

(Strategic) Alliance Manager



Want to meet? Use:

FTMPartners@microsoft.com

Request from FY25 Q1 session

DEMO – project card in MigHub

Jules Humbird - Americas/EMEA

Gokul Pillai - Asia

Migrations: Getting Started

Customers and Partners can use the FastTrack Migration Hub to complete migration tasks, track progress and get help all in one place.

Once a Global Admin has consented to the FastTrack portal access to the tenant, additional permissions can be granted to colleagues and partners.

Get started at <https://fasttrack.microsoft.com>

The screenshot shows the Microsoft FastTrack Migration Hub interface. At the top, there is a navigation bar with the Microsoft logo, 'FastTrack', 'My customers', 'Resources', and 'Help'. A user profile for 'Jules Humbird' is visible in the top right corner. Below the navigation bar, a blue header displays the tenant name 'test'. The main content area is divided into several sections:

- Quick actions:** This section contains three cards: 'Request assistance with Microsoft 365 (new location)', 'Migrations', and 'Request services'. Each card provides a brief description of the action and a link to further details.
- All submitted services for [tenant].onmicrosoft.com:** This section shows a message stating 'No services have been submitted for this customer. View all available services'.
- Team members:** This section includes an 'Add team member' button and is divided into two sub-sections:
 - Internal team (3):** Lists three internal team members with their names, email addresses, and roles (Admin, Standard, Standard).
 - External authorized users (4):** Lists four external authorized users, all from Microsoft, with their names and roles. One user, Jules Humbird, has an 'Edit access' link.

At the bottom right, there is a 'Let's chat' button with the text 'We're Online'.

Migrations: Project card

You can create a new migration project, after filling all the required information you will be presented with your new project card. These cards are used to manage credentials, recipients, user mapping, and schedule migration events.

Learning Center:

<https://fasttrack.microsoft.com/v2/en-us/migration/learning-center>

Useful migration documents:

<https://aka.ms/fpc.fasttrackmigration>

[FastTrack](#) / [test](#) / Migrations

Migrations for test

Here you will find resources, links and tools needed to help you plan, prepare and execute your organization's successful migration.

Learning center

Whether this is your first migration or you're a seasoned pro, you can find quick-tips, videos and guides to get you up to speed in no time, with more confidence and at your own pace with these resources. [Go to the learning center](#) >

Create a new migration project

Give your project a name. *(Don't worry, you can change it later) **

What type of migration are you performing?

This is a test migration type

Continue project setup

GDrive Test

Additional actions ▾

Phase: Active Type: Google Drive

Actions

[View prerequisites](#)

[Manage recipients](#)

[Manage credentials](#)

[Manage permission map](#)

[View migration data](#)

No upcoming events

[Add event](#)

0 Running | 0 Completed

[View all events](#)

Gmail Test

Additional actions ▾

Phase: Active Type: Gmail

Actions

[View prerequisites](#)

[Manage recipients](#)

[Manage credentials](#)

[View migration data](#)

No upcoming events

[Add event](#)

0 Running | 0 Completed

[View all events](#)

Migrations: Project Card Phases

Onboarding Phase:

- Prerequisites
- Credentials Management
- Recipient Management
- User Mapping (for GDrive, Dropbox, Box and File Share)

Active Phase:

- Schedule Events
- Manage Events
- Manage Credentials
- Manage Recipients

Closed Phase:

30 days after the last event for a migration project completes, the closure process will automatically delete credentials in the Azure Key Vault. Projects cannot be reopened; they must be recreated.

Completed migration projects are displayed as Closed. No customer information is retained.

Others

Phase: Active Type: Exchange

Additional actions ▾

Actions

- [View prerequisites](#)
- [Manage recipients](#)
- [Manage credentials](#)
- [View migration data](#)

No upcoming events

- [Add event](#)

1 Running | 1 Completed

- [View all events](#)

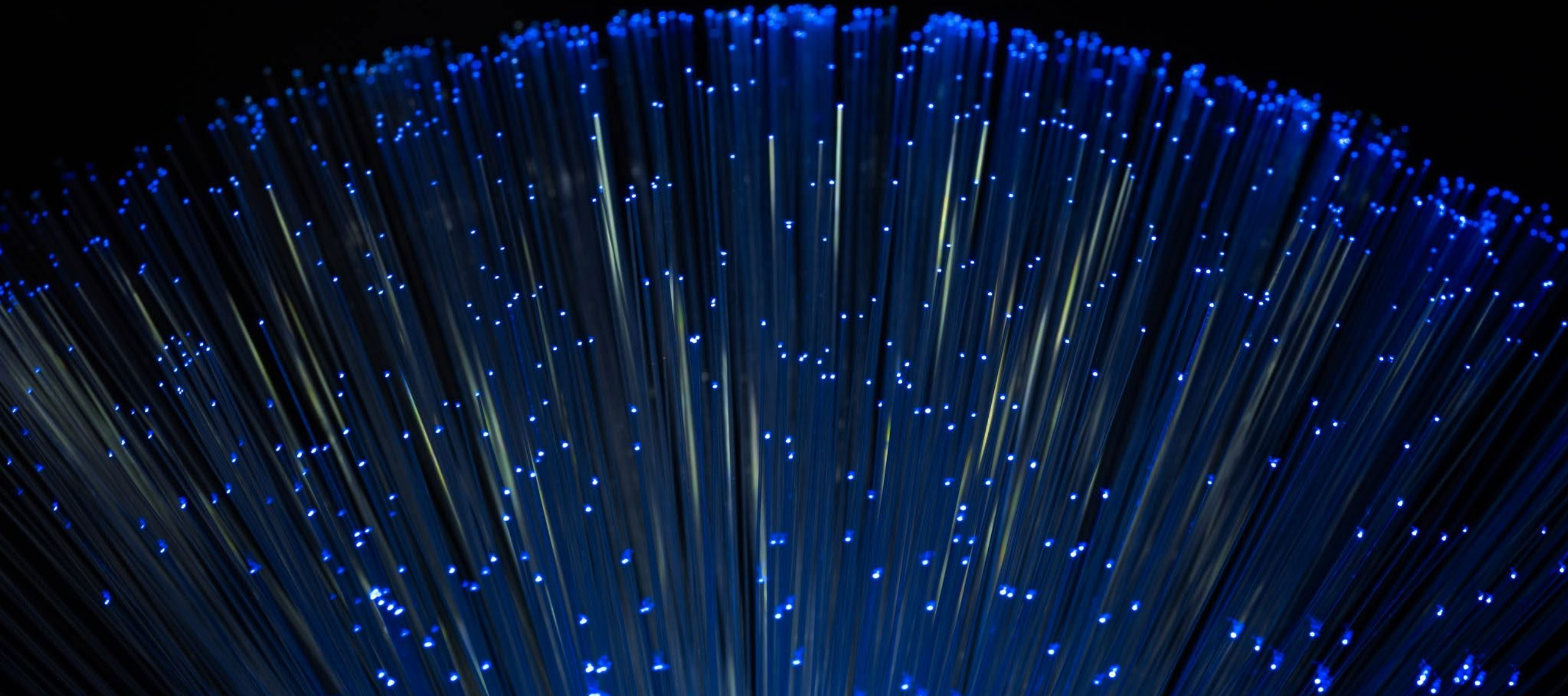
Exchange Online Migration

Phase: Closed Type: Exchange

Q&A



Thank you



Other Videos

[Gmail to Exchange](#)

[How to Get Help](#)

[FastTrack Content Cloud Migration - Box](#)