

# Partners Migration Open Office Hours

FY25 Q1 - September  
2024



# Call Agenda

Topic	Americas/EMEA Speaker	APJ Speaker
Six-month FastTrack Migrations Roadmap	Jules Humbird	Gokul Pillai
Partner action in FT Migration Process	Vicky Barahona	Gokul Pillai
Migration benefit refresher	Dave Parlante/Tony Curry	Gokul Pillai
Q&A	All	Gokul Pillai

**Questions - use:  
FTMPartners@microsoft.com**

# Migration Benefit Updates

## Six-month FastTrack Migrations Roadmap

Jules Humbird- Americas/EMEA

Gokul Pillai- APJ

E@RS S Q@BJ RDQUHBDR QN @C L @O

## New FastTrack Workloads

FastTrack (FT) Migrations is currently evaluating new migration workloads

- Slack to Teams (S2T) Migrations – case by case basis exception with FastTrack 3<sup>rd</sup> Party tooling will roll out in Q1 FY25
- Tenant to Tenant (limited FastTrack Private Preview)
- Google Compete (Forms (live in MM), Resources (Preview), Sites (not on roadmap), Identity/Groups (in the works), Mailbox analysis)
- Gmail Permissions/Delegates and Tasks (no tentative date. Went live and changes were reverted)

## Security Improvements

As part of FT Migrations, we will make investments in the following areas:

- CoPilot – Migration Coaching, throughput Analysis (FY 2025)
  - ChatBot is now available
- Role Based Access Controls (RBAC) for File Share Migrations – Migrator Role (Scheduled for Q1)
- Certificate based authentication for email migrations (Exchange/Gmail)

**Questions - use:  
FTMPartners@microsoft.com**

# FastTrack Migrations Process

## Partner Process

Vicky Barahona-Americas/EMEA

Gokul Pillai- APJ

# Onboarding Actions

1. Presenting the [FastTrack Migration Benefit](#) & walkthrough of the [Learning Center](#)
2. Register for the [FastTrack Portal](#) & gain access to MigHub / Project Cards
3. Prepare technical migration pre-requisites - Source and Target Environments
4. Transition to FastTrack Migration Team (File Share Migration Only)
5. Accompany velocity migration activities until their completion

## Supporting materials

1. FastTrack Migration Benefit & the Learning Center
2. FastTrack Migration Academy portal <https://aka.ms/fpc.fasttrackmigration> :
  - a. FastTrack migration OnePagers
  - b. RACI
  - c. Interactive guides
3. EXO, SPO and Migration SME's requests

# FastTrack Migrations Benefit

## FastTrack Migration Benefit Refresher

Dave Parlante- Americas/EMEA

Gokul Pillai- APJ

E@RS S Q@BJ C @S@ L HF Q@S HN M ADMDEHS R

**Workloads:** Exchange Online (EXO), OneDrive for Business (OD), SharePoint Online (SPO), and Teams

**Language Coverage (MST):** English

**Requirements for Migration Services:** minimum 150 eligible licenses

FastTrack Migrations focuses on automation, On Demand support for Commercial customers, proactive monitoring, and migration reporting.

## Email Migration

(1<sup>st</sup> party tool: EXO MRS):

- Exchange Hybrid
- Gmail

## Content Migration

(1<sup>st</sup> party tool: Migration Manager):

- File Share
- Box
- Dropbox
- Google Drive



E@RS S Q@BJ C @S@ L HF Q@S HN M ADMDEHS

## What do you need to know?

**Workloads:** Exchange Online, OneDrive for Business, SharePoint Online, and Teams

**Language coverage:** English

**For M365 tenants with 150–499 licenses:** FastTrack provides migration guidance only; customers are responsible for performing the data migration.

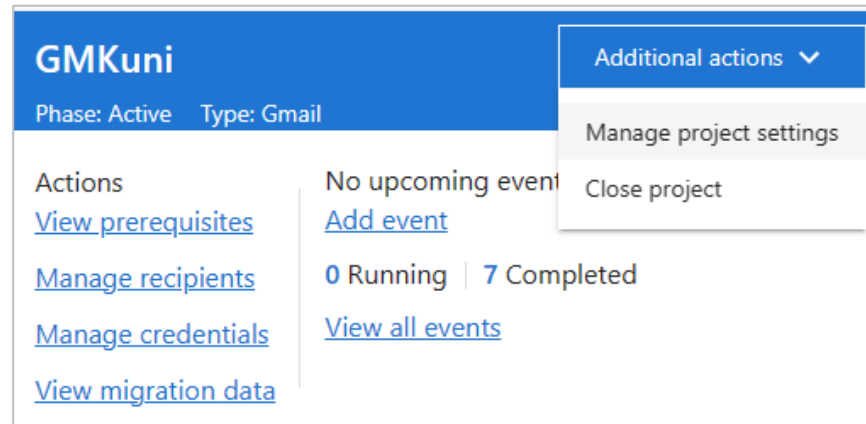
**For M365 tenants with 500 or more licenses:** FastTrack provides migration guidance and data migration services. FastTrack Migrations focus on automation, on-demand support for migration issues, proactive monitoring, and migration reporting.

**Included in the [FastTrack Data Migration Benefit:](#)**

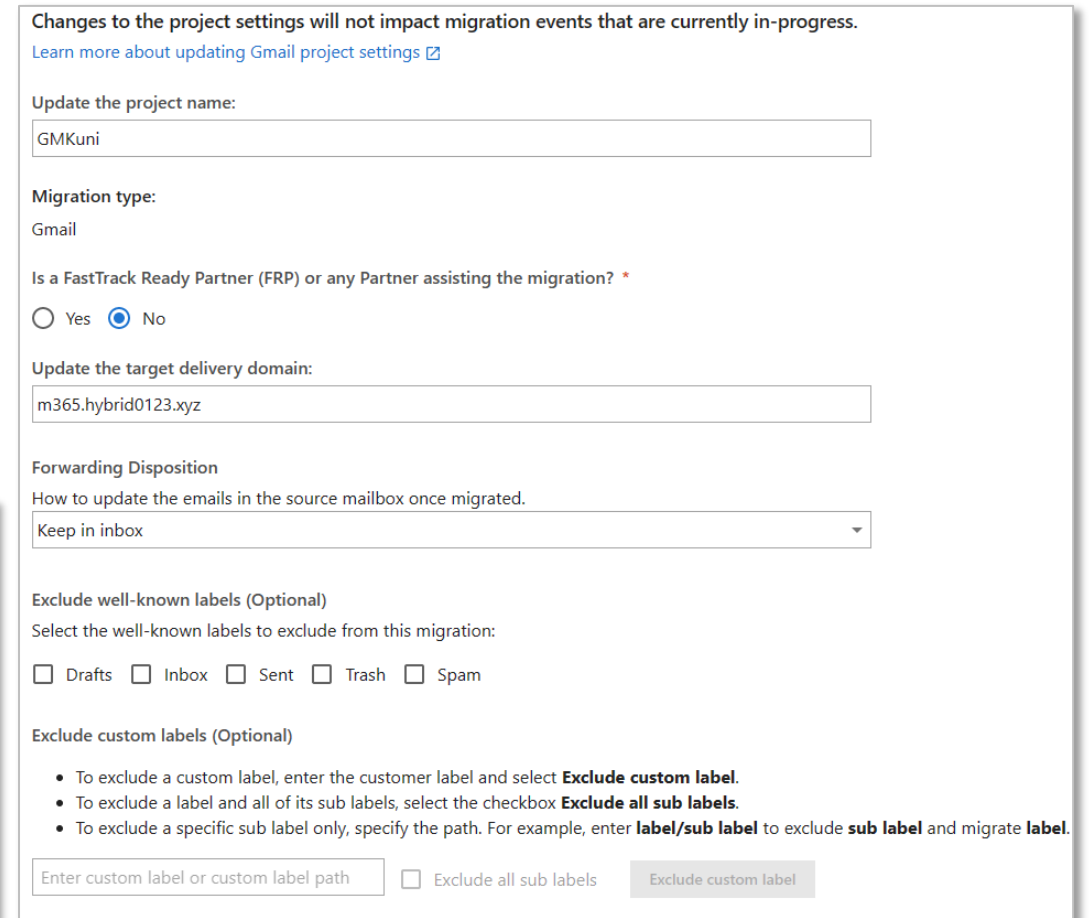
- Support for Commercial Customers (globally)
- Support for US Government (GCC)
- First-party Microsoft Migration Tools

# Migration Hub has more options with more flexibility

- Exclusion of well-known labels (optional), custom labels, and rules (Gmail filter)
- Exclusion of calendar and contacts
- Date filters



The screenshot shows the Migration Hub interface for a project named 'GMKuni'. The header indicates the project is 'Active' and of 'Type: Gmail'. A dropdown menu for 'Additional actions' is open, showing options for 'Manage project settings' and 'Close project'. On the left, there are links for 'View prerequisites', 'Manage recipients', 'Manage credentials', and 'View migration data'. On the right, it shows 'No upcoming events' with an 'Add event' link, and a progress indicator showing '0 Running' and '7 Completed' with a 'View all events' link.



The screenshot shows the 'Changes to the project settings' page. It includes a warning that updates won't affect in-progress events, a link to learn more, and several configuration fields: 'Update the project name' (set to GMKuni), 'Migration type' (Gmail), 'Is a FastTrack Ready Partner (FRP) or any Partner assisting the migration?' (No selected), 'Update the target delivery domain' (m365.hybrid0123.xyz), 'Forwarding Disposition' (Keep in inbox), 'Exclude well-known labels (Optional)' (Drafts, Inbox, Sent, Trash, Spam), and 'Exclude custom labels (Optional)' with instructions and a text input field.

# Migration reporting

GMKuni
Additional actions ▾

Phase: Active Type: Gmail

Actions

- [View prerequisites](#)
- [Manage recipients](#)
- [Manage credentials](#)
- [View migration data](#)

No upcoming events

[Add event](#)

0 Running | 7 Completed

[View all events](#)

FastTrack / MIGRATION TEAM / Migrations / Migration data

### Migration data

Project name: GMKuni Migration type: Gmail Project status: Active Last data refresh time: 5/30/2023 09:13 AM Last event start time: 5/30/2023 09:00 AM

All In progress Investigate Completed

Item summary	In progress	Completed	Autosuspended	Failed	Needs approval
	0	0	0	2	0

Events (8)

Filter by event type  Search

Event name	Health	Overall status	Event type	Batch count	Scheduled date	Total conten...	Mail count	Total ite...	Succ...	Failed	In progr...	Other	Start tim
<a href="#">Completion Test</a>	Healthy	Completed	Completion	1	5/30/2023	0	0	0	0	1	0	0	5/30/2
<a href="#">Kuni Test3 (Please Ignore)</a>	Healthy	Completed	Sync	1	5/25/2023	95	136	0	1	0	0	0	5/25/2
<a href="#">Kuni's Test 2 (please ignore)</a>	Healthy	Completed	Completion	1	5/25/2023	95	178	0	0	2	0	0	5/25/2
<a href="#">Kuni's Test (Please Ignore)</a>	Healthy	Completed	Sync	1	5/25/2023	95	178	0	2	0	0	0	5/25/2
<a href="#">Suspended(Please Ignore)</a>	Healthy	Completed	Sync	1	5/25/2023	0	0	0	0	1	0	0	5/25/2
<a href="#">TestRun2</a>	Healthy	Completed	Completion	1	5/25/2023	95	161	0	0	2	0	0	5/25/2
<b>Total</b>				<b>8</b>		<b>71.2500</b>	<b>942</b>	<b>0</b>	<b>6</b>	<b>6</b>	<b>0</b>	<b>0</b>	

items per page 20 ▾ 1-8 of 8

- In FY24, PowerBI Reporting was deprecated and replaced with the **new migration reporting format**.
- Report is accessible within MigHub!

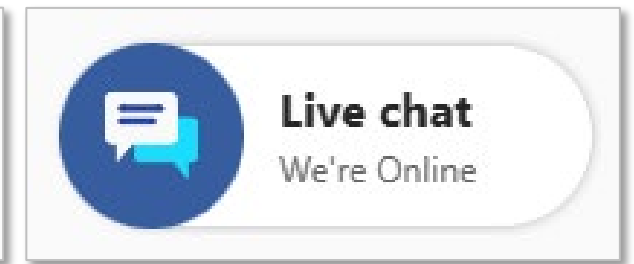
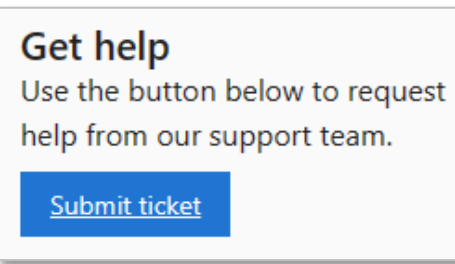
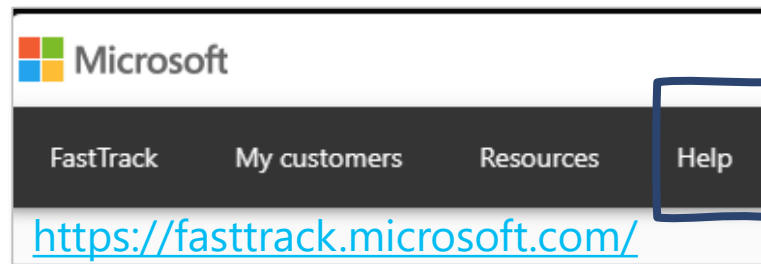
Downloadable materials: [PowerPoint Presentation](#)

HL OQNUHMF SGD L HF Q@SHNM DWODQHDMBD

## Current support model

As part of our continuous effort to improve the migration experience of our customers, we implemented the following changes to FastTrack Migrations Support Model:

- The FastTrack Migrations **MST focuses on the core FastTrack Migration Platform**
- **FastTrack Productivity SME's or FastTrack Partners** focus on anything related to **general questions, onboarding, or pre-requisites**
- **Microsoft Customer Support** (Unified) focus on **anything related to the core migration services** of our Microsoft 365 products (**Exchange** and **OneDrive for Business/SharePoint Online**)



# Hmsdq` bshud

# F t h e d r n m s g d E O B O n q s ` k

Microsoft [FPC Learning Academy Home](#)

FastTrack Partner Community  
**FastTrack Migration**  
FastTrack Migrations (FTM): efficient migration from a trusted service



## What is FastTrack Migration?

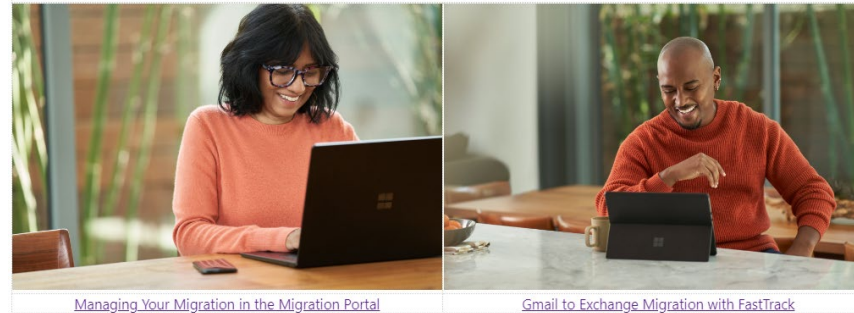
FastTrack Migration is a pivotal component in the realm of aiding customers with seamless transitions of their data and email services.


Comprehending its intricacies is paramount for partners aiming to deliver efficient and successful migrations.

Critical for partners an understanding of FastTrack Migration provides the necessary tools and insights to expertly guide customers through the entire migration process.



[aka.ms/fpc.fasttrackmigration](https://aka.ms/fpc.fasttrackmigration)



 Demo of the FastTrack for Microsoft 365 migration experience

**Demo of the FastTrack for Microsoft 365 migration experience**

Microsoft FastTrack assists with migrations to Microsoft 365 for tenants with 500 or more licenses, at no additional cost with your eligible subscription. Learn more at [aka.ms/FastTrackServiceDescription](#)

**Featured Migration Content in the Knowledge Base**

- [Migration Process Description](#)
- [Migration: Roles and Responsibilities](#)
- [FastTrack Success with SMEs: Exchange Migration](#)
- [Partner Support: Migration Subject Matter Expert Program](#)

## Nma n ` q c h m f @ r l r s ` m b d

- Step by Step interactive guides that allow self-serve onboarding
- Focused on processes to onboard and ready for migrations
- Interactive requiring interaction by user
- Hosted from FastTrack Portal and don't require a login. No gatekeeping

[FastTrack Migration Hub \(fasttrack-gmail-to-exchange-online-migration.azurewebsites.net\)](https://fasttrack-gmail-to-exchange-online-migration.azurewebsites.net)

# Questions & Answers

---

THANK YOU

A top-down view of several people's hands stacked together in a circle, symbolizing teamwork and gratitude. The hands are of various skin tones and are wearing professional attire like suits and blouses. The background is a dark, textured floor.

## Other Videos

[Gmail to Exchange](#)

[How to Get Help](#)

[FastTrack Content Cloud Migration - Box](#)